



Our Lady of the Assumption

Catholic Primary School



Approved Safeguarding and Child Protection Policy

Approved by Full Governing Body: 24th September 2025

Signed

Chair of Governors.

To be reviewed: September 2026, or dependant on any legislative changes

Safeguarding Statement: 'Our Lady of the Assumption Catholic Primary School is committed to safeguarding and promoting the safety and welfare of all children and expects all staff, parents and volunteers to share this commitment.'

Culture of Vigilance – At Our Lady of the Assumption we promote a culture of vigilance. We keep our eyes open, our ears open and we think the unthinkable.

Policy last reviewed: September 2025

Reviewed by: Rachel Askew, September 2025

Agreed by governors: 24th September 2025

Shared with staff: 25th September 2025

Frequency of review: Annually

Date of next review: September 2026

Head Teacher: Rachel Askew

Designated Safeguarding Lead: Rachel Askew, Headteacher

Deputy Designated Safeguarding Lead: Geraldine Lucas, Pastoral Manager

Named Governor for Safeguarding: Anne Walker

Chair of Governors: Patrick Daly Tel: 02476466655

Vice Chair of Governors: Anne Walker Tel: 02476466655

Designated Lead for Children Looked After and Previously Looked-After: Amanda Finch

Early Help Assessment Co-ordinator: Fiona Smith 02476 976244

Local Authority designated officer: Nina Farrimond and Beki Habberley Lado@coventry.gov.uk

Safeguarding in Education Adviser: Charlotte Hegarty charlotte.hegarty@coventry.gov.uk

MASH: MASH@coventry.gov.uk or 02476 788555

MASH Education Representative: Claire McElroy claire.mcelroy@coventry.gov.uk

Prevent: Prevent@coventry.gov.uk

Emergency Duty Team: 024 7683 2222

Table of Contents

Draft Safeguarding and Child Protection Policy	1
1 Definitions	3
2 Introduction.....	3
3 Roles and Responsibilities	5
4 Types of abuse.....	10
5 Responding to signs of abuse	15
6 Record-keeping	22
7 Photography and Images.....	23
8 Early Help Assessment	23
9 Staff training.....	24
10 Safer Recruitment	24
11 Allegations of abuse against staff	25
12 Promoting safeguarding and welfare in the curriculum	28
13 Children Looked After	28
14 Children with Special Educational Needs and Disabilities or physical health needs	28
15 Use of reasonable force	29
17 Children staying with host families (see Annex D KCSIE)	30
18 Summary	30
Appendix A	31
Appendix B – Further Safeguarding Information	32

1 Definitions

1.1 'Safeguarding' is defined in Keeping Children Safe in Education (2025) as:

- Providing help and support to meet the needs of children as soon as problems emerge
- protecting children from maltreatment; whether that is within or outside the home, including online.
- preventing impairment of children's mental and physical health or development.
- ensuring that children grow up in circumstances consistent with the provision of safe and effective care; and
- taking action to enable all children to have the best outcomes.

1.2 'Child Protection' is the intervention that occurs when children have been significantly harmed or are at risk of significant harm.

1.3 'Child' refers to everyone under the age of 18.

1.4 'Parent' refers to birth parents and other adults in a parenting role for example adoptive parents, stepparents and foster carers.

1.5 'Staff' or 'members of staff' refers to all teaching, non-teaching, support, supply, peripatetic, contract staff, governors, volunteers and trustees working in or on behalf of Our Lady of the Assumption Catholic Primary School.

1.6 Within this policy, we use the term 'victim', although it is recognised that not everyone considers themselves to be a victim or would want to be described in this way. We also recognise the importance of not using the terminology of 'perpetrator' in relation to children in cases where the behaviour can be harmful to both parties. The appropriate use of terminology will be determined on a case-by-case basis.

2 Introduction

2.1 We recognise that safeguarding, child protection and promoting the welfare of children is an essential part of our duty of care to all students. As such, all staff and governors have a responsibility to provide a safe environment in which children can learn. We understand that safeguarding, child protection and promoting the welfare of all children is everyone's responsibility and everyone has a role to play in protecting children. We recognise that our school is part of a wider safeguarding system for children and work closely with other agencies to promote the welfare of children. We maintain an attitude of 'it could happen here' and will consider what is in the best interests of each child in line and upholding the Human Rights Act 1998 and Equality Act 2010.

2.2 The purpose of this policy is to:

- Promote safeguarding and child protection and to demonstrate Our Lady of the Assumption Catholic Primary School's commitment to keeping children safe.
- Provide all members of staff with the information required to meet their safeguarding duty and protect children from harm.
- Provide stakeholders with clear information relating to Our Lady of the Assumption Catholic Primary School's safeguarding and child protection procedures.
- Ensure that staff understand, can recognise and can respond to the indicators of abuse, exploitation or neglect.

- Ensure that all staff are aware of their mandatory reporting duty in relation to Section 5B of the Female Genital Mutilation Act 2003; and
- Ensure that children are protected from maltreatment or harm.

2.3 Our Lady of the Assumption Catholic Primary School is committed to the following principles.

- All children have the right to be protected from harm.
- Children should feel safe and secure and cannot learn unless they do so.
- All staff are responsible for keeping children safe and have a responsibility to act if they think a child is at risk of harm.
- All staff take on a responsibility to promote children's welfare
- Working with other agencies is essential to promote safeguarding and protect children from harm.
- Early help and providing support to families and/or children as soon as a problem emerges is essential to improving outcomes for children and families.
- Providing support to families and/or children as soon as a problem emerges is essential to improving outcomes for children and families.

2.4 Safeguarding aims

The safeguarding aims of Our Lady of the Assumption Catholic Primary School, in line with Keeping Children Safe in Education (September 2025) are to:

- work to identify children who are suffering or likely to suffer abuse, exploitation or neglect and act to protect them.
- work with relevant services and agencies to ensure that children are protected from harm.
- provide a learning environment for children which is safe and secure.
- teach children how to keep themselves safe and provide structures for them to raise concerns if they are worried or at risk of harm.
- support children's mental health and wellbeing.
- ensure that we adhere to safer recruitment guidance and legislation, deal promptly with allegations of abuse against staff and take bullying and harassment seriously.
- train staff effectively in all safeguarding issues (including online safety) and in their responsibilities for identifying and protecting children that are or may be at risk of harm.
- have a designated safeguarding lead and designated deputies, who will provide support to staff, students and families.
- recognise that all children may be vulnerable to abuse but be aware that some children have increased vulnerabilities due to special educational needs or disabilities or particular protected characteristics (LGBTQA+, gender questioning etc).
- maintain a robust recording system for any safeguarding or child protection information.
- ensure that everyone in Our Lady of the Assumption Catholic Primary School understands the safeguarding procedures; and to
- regularly review policies and procedures to ensure that children are protected to the best of our ability.

2.5 This policy adheres to the following documents:

- [Keeping Children Safe in Education \(2025\)](#)
- [Working Together to Safeguard Children \(2023\)](#)

2.6 We continue to work closely with the Local Authority and the Coventry Safeguarding Children Partnership to safeguard children across the city.

2.7 Please note that there are a number of other documents (statutory and non-statutory) that inform our policy and practice. A list of these can be found in Annex B of Keeping Children Safe in Education (September 2025).

2.8 This policy should be read in conjunction with the policies detailed in Appendix A.

2.9 Scope

2.9.1 This policy applies to all teaching, non-teaching, support, supply, peripatetic, contract staff, governors, volunteers and trustees working in or on behalf of Our Lady of the Assumption Catholic Primary School. All references in this document to 'staff' or 'members of staff' should be interpreted as relating to the aforementioned unless otherwise stated.

2.9.2 Rather than duplicating content from Keeping Children Safe in Education (September 2025) in this policy, it should be understood that Our Lady of the Assumption Catholic Primary School will always refer to this document as the benchmark for all safeguarding practice.

3 Roles and Responsibilities

3.1 The Role of the Governing Body

3.1.1 Our Lady of the Assumption Catholic Primary School has a Governor to take strategic leadership responsibility for safeguarding. This role is carried out by Mrs Anne Walker, Vice Chair of Governors. Part 2 of Keeping Children Safe in Education (September 2025) sets out the responsibilities of governing bodies. As part of these overarching responsibilities the Governing Body will:

- Have a strategic leadership responsibility for Our Lady of the Assumption Catholic Primary School safeguarding arrangements.
- Aware of the obligations under the Human Rights Act 1998, the Equality Act 2010 and the Public Sector Equality Duty
- Ensure that they comply with their duties under legislation.
- Ensure a whole school approach to safeguarding, including the use of mobile and smart technology in school.
- Ensure that policies, procedure and training in Our Lady of the Assumption Catholic Primary School are effective and comply with the law at all times and that they allow concerns to be responded to in a timely manner.
- Ensure that Our Lady of the Assumption Catholic Primary School takes into account local authority and Coventry Safeguarding Children Partnership policies and supply information as requested by the three safeguarding partners (the Local Authority, a clinical commissioning group for an area within the local authority and the chief office of police for a police area within the local authority).
- Ensure that Our Lady of the Assumption Catholic Primary School has an effective child protection policy, that it is published on Our Lady of the Assumption Catholic Primary School website or available by other means and review this annually.

- Ensure that Our Lady of the Assumption Catholic Primary School has a staff behaviour policy or Code of Conduct, which refers to low level concerns, allegations against staff and whistleblowing procedures alongside acceptable use of technologies.
- Ensure that all staff and governors undergo safeguarding and child protection training on induction (including online safety and filters and monitoring processes); and this is regularly updated.
- Ensure the school contributes to multi-agency working in line with statutory guidance.
- Ensure that there are clear systems and processes in place for identifying when children may be experiencing mental health problems.
- Ensure that children are taught about safeguarding, including online safety as a whole school approach and curriculum planning but recognising that a one size fits all approach may not be appropriate for all children. See section 12 of this policy for further information.
- Put in place and follow appropriate safeguarding responses for children who are absent from education.
- Appoint an appropriate member of staff from the senior leadership team to the role of Designated Safeguarding Lead.
- Understand the local criteria for action and local protocol for assessment.
- Recognise the importance of information sharing between practitioners and local agencies but take a risk-based approach to level of information that is provided to temporary staff, volunteers and contractors.
- Ensure that appropriate filters and monitoring systems are in place to keep children safe online and share information regarding online abuse and risks including where to access advice with parents and carers; and
- Respond to allegations of abuse against the headteacher whilst ensuring there are procedures in place to manage safeguarding concerns, or allegations against staff (including supply staff, volunteers and contractors). And
- Ensure safer working practice is embedded and effective within policies.

3.2 The Role of the Headteacher

3.2.1 The headteacher will:

- Ensure that this policy is reviewed annually at minimum and ratified by the governing body.
- Ensure that this policy and associated procedures are adhered to by all staff.
- Ensure that all staff are made aware of the named governor for safeguarding and the Designated Safeguarding Lead.
- Ensure that the role of 'Designated Safeguarding Lead' is explicit in the role-holder's job description including leading on filters and monitoring processes;
- Decide whether to have one or more deputy safeguarding leads and ensure they are trained to the same standard as the Designated Safeguarding Lead.
- Organise appropriate cover for the role of Designated Safeguarding Lead for any out of hour/out of term activities.
- Appoint a 'Designated Teacher for Looked-After and Previously Looked-After Children' to promote the educational achievement of children looked after.
- Appoint a lead for online safety: Rachel Askew, DSL
- Promote a whole school approach to safeguarding.

- Promote resilience to social and emotional wellbeing, which is tailored to the needs of the children.
- Ensure that all recruitment follows the 'Safer Recruitment' guidance, and a single, central record is maintained with details of all members of staff who are in contact with children.
- Respond to allegations of abuse against all other members of staff supply staff, volunteers and contractors.
- Refer cases where a person is dismissed or left due to risk/harm to a child to the Disclosure and Barring Service as required.
- Ensure that the school works with Children's Services, the police, health services and other services to; promote the welfare of children; provide a co-ordinated offer of early help assessments when need is identified; contribute to inter-agency plans for children subject to children protection plans and to protect children from harm.
- Safeguard children's wellbeing and maintain public trust in the teaching profession as part of their professional duties (Teaching Standards, 2012); and
- Ensure that children's Services (from the host local authority or placing authority) have access to Our Lady of the Assumption Catholic Primary School to conduct, or to consider whether to conduct a section 47 or section 17 assessment, as per Keeping Children Safe in Education (September 2025).

3.3 The Role of the Designated Safeguarding Lead

3.3.1 The Designated Safeguarding Lead for Our Lady of the Assumption Catholic Primary School is Rachel Askew. Our Deputy Designated Safeguard Lead in the DSL's absence is Geraldine Lucas. The Designated Safeguarding Lead will:

- Take overall lead responsibility for safeguarding and child protection (including online safety and filters and monitoring) in Our Lady of the Assumption Catholic Primary School.
- Liaise with the safeguarding partners and work with other agencies in line Working Together to Safeguard Children (2023).
- Always be available during term time (during school hours) for staff in the school to discuss safeguarding concerns. If they are not available, a deputy will be made available.
- Undergo training to provide them with the knowledge and skills required to carry out this role updated a minimum of biannually.
- Act as a source of support and expertise on matters relating to safeguarding and child protection to ensure that other members of staff can carry out their safeguarding duty.
- Be best placed to advise on the response to safeguarding concerns.
- Liaise with the Local Authority and work with other agencies in line with 'Working Together to Safeguard Children (2023).
- Identify if children may benefit from early help.
- Act as a point of contact with the safeguarding partners.
- Make referrals to Coventry's Multi-Agency Safeguarding Hub (MASH) where children have been harmed or are at risk of significant harm.
- Make referrals to the Channel programme where there is a radicalisation concern and/or support staff that make a referral to Channel.
- Support the school with regards to their responsibilities under the Prevent duty and provide advice and support on protecting children from radicalisation.

- Refer cases to the police where a crime may have been committed¹.
- Be available during school hours for staff to discuss any safeguarding concerns. If they are not available, a deputy will be made available.
- Undertake training to equip them with the skills to carry out the role and update this every two years.
- Ensure all staff have read and understood Part 1 and/or Annex A of Keeping Children Safe in Education (September 2025).
- Update their knowledge and skills regularly and keep up with any developments relevant to their role.
- Provide staff in school with the knowledge, skills and support required to safeguard children.
- Take responsibility for the accurate and timely recording of safeguarding and child protection concerns and take overall responsibility for safeguarding and child protection files.
- Take responsibility for the transfer of safeguarding files when a child leaves Our Lady of the Assumption Catholic Primary School.
- Attend or ensure an appropriate representative attends multi-agency safeguarding or child protection meetings.
- Promote supportive engagement with parents and/or carers in safeguarding and promoting the welfare of children.
- Work closely with other relevant education professionals (e.g. SENCO, Virtual School Head) to ensure children with additional vulnerabilities are safeguarded.
- Help to promote educational outcomes of children who have experienced or are experiencing safeguarding or child protection issues by sharing relevant information with teachers and the school leadership team.
- Promote a 'culture of safeguarding', in which every member of Our Lady of the Assumption Catholic Primary School community acts in the best interests of the child.
- Ensuring the school knows who in its cohort of children have or have had a social worker, understanding their academic progress and attainment, and maintaining a culture of high aspirations.
- Regularly meet (every half term at a minimum) with the safeguarding link governor and/or Chair of Governors to review safeguarding in Our Lady of the Assumption Catholic Primary School; and
- Liaise with the headteacher regarding safeguarding cases and issues.
- Liaise with the senior mental health lead when safeguarding concerns are linked to mental health
- Be Aware of the requirement for children to have an Appropriate Adult – PACE code C 2019

3.3.2 Further details on the role of the Designated Safeguarding Lead can be found in Annex C of Keeping Children Safe in Education (September 2025).

3.4 The Role & Responsibilities of all Staff within School

School staff play a particularly important role because they are in a position to identify concerns early in order to provide help for children. All staff in Our Lady of the Assumption Catholic Primary School:

- Have a responsibility to provide a safe environment, where children can learn.

- Will be able to identify indicators of abuse, exploitation or neglect; with an awareness of safeguarding issues that put children at risk of harm and behaviours associated with these risks.
- Should know what to do if a child tells them that he/she is being abused, exploited or neglected but that children may not feel ready or know how to tell someone that they are being abuse, exploited or neglected and/or recognise their experience as harmful.
- Will be aware of indicators of child-on-child abuse and procedures to deal with this.
- All staff, but especially the DSL and deputies, will also consider whether children are at risk of abuse or exploitation in situations outside their families.
- Will be made aware of; the safeguarding and child protection policy; the school behaviour policy; the staff code of conduct; information about the safeguarding response to children absent from education; the role of the designated safeguarding lead and systems in Our Lady of the Assumption Catholic Primary School that support safeguarding and child protection.
- Will be provided with a copy of Part 1/Annex A of Keeping Children Safe in Education (September 2025) annually and receive annually updated training on their safeguarding roles and responsibilities.
- Should have an awareness of safeguarding issues that put children at risk of harm and behaviours associated with these risks.
- Should know what to do if a child makes a disclosure of abuse and never promise confidentiality when a child makes a disclosure.
- Will be made aware of the early help assessment process and understand their role in it.
- Should be prepared to identify children who may benefit from early help and will discuss early help requirements with the safeguarding lead in the first instance.
- May be required to support social workers and other agencies following a referral.
- Will be made aware of the process for making referrals to Children's Services (through the MASH), understand statutory assessments and the role that they may be expected to play in such assessments.
- Should be prepared to make referrals to the MASH if they have concerns about a child's welfare and understand the role that they may be expected to play in such assessments.
- Understands the referral process to the (LADO) and the role they play should they have concerns or allegations are made against any member of staff.
- Will receive regularly updated safeguarding and child protection training, including online safety.
- Will receive safeguarding updates throughout the year as part of continuous professional development.
- Should be able to contribute to the development of safeguarding policy and practice.
- Should always seek advice from the Designated Safeguarding Lead if they are unsure; and
- All teachers should safeguard children's wellbeing and maintain public trust in the teaching profession as part of their professional duties (Teaching Standards, 2012).

3.5 Multi-Agency Working

3.5.1 The school is committed to multi-agency working and operates under Working Together to Safeguard Children (2023) and local safeguarding arrangements.

3.5.2 The school will work with Children's Services, the police, health services, local Early Help practitioners and other relevant agencies to promote the welfare of children and protect them from harm.

3.5.3 We work closely with our local Family Hub to ensure children receive appropriate, co-ordinated Early Help Assessments.

3.5.4 The Coventry Safeguarding Children Partnership (CSCP) have designated that schools and colleges are a named ‘relevant agency’. As such, the school is under a statutory duty to co-operate with published CSCP arrangements.

4 Types of abuse, Neglect and Exploitation

4.1 As outlined above, all staff will be trained in indicators of abuse, exploitation and neglect and should be able to recognise signs of these. We recognise that abuse, exploitation and neglect along with other safeguarding issues are complex and often multidimensional and therefore don’t fall solely under one category. Types of abuse or harm can take many forms including directly inflicting harm on a child or failing to protect a child from harm online as well as face to face both inside and outside of the school/college as well as online, including the multi-faceted occurrence of factors causing emotional harm.

The four main types of abuse that staff are trained to recognise are:

- Physical abuse
- Sexual abuse
- Emotional abuse
- Neglect

4.2 Types of abuse (Taken from Keeping Children Safe in Education, 2024)

Type of abuse	Information
Abuse	A form of maltreatment of a child. Somebody may abuse or neglect a child by inflicting harm, or by failing to act to prevent harm. Harm can include ill treatment that is not physical as well as the impact of witnessing ill treatment of others. This can be particularly relevant, for example, in relation to the impact on children of all forms of domestic abuse. Children may be abused in a family or in an institutional or community setting by those known to them or, more rarely, by others. Abuse can take place wholly online, or technology may be used to facilitate offline abuse. Children may be abused by an adult or adults, or another child or children.
Physical abuse	A form of abuse which may involve hitting, shaking, throwing, poisoning, burning or scalding, drowning, suffocating or otherwise causing physical harm to a child. Physical harm may also be caused when a parent or carer fabricates the symptoms of, or deliberately induces, illness in a child.
Emotional abuse	The persistent emotional maltreatment of a child such as to cause severe and persistent adverse effects on the child’s emotional development. It may involve conveying to a child that they are worthless or unloved, inadequate, or valued only insofar as they meet the needs of another person. It may include not giving the child opportunities to express their views, deliberately silencing them or ‘making fun’ of what they say or how they communicate.

Type of abuse	Information
	<p>It may feature age or developmentally inappropriate expectations being imposed on children. These may include interactions that are beyond a child's developmental capability, as well as overprotection and limitation of exploration and learning, or preventing the child participating in normal social interaction. It may involve seeing or hearing the ill-treatment of another. It may involve serious bullying (including cyber bullying), causing children frequently to feel frightened or in danger, or the exploitation or corruption of children. Some level of emotional abuse is involved in all types of maltreatment of a child, though it may occur alone.</p>
Sexual abuse	<p>Involves forcing or enticing a child or young person to take part in sexual activities, not necessarily involving violence, whether or not the child is aware of what is happening. The activities may involve physical contact, including assault by penetration (for example, rape or oral sex) or non-penetrative acts such as masturbation, kissing, rubbing and touching outside of clothing. They may also include non-contact activities, such as involving children in looking at, or in the production of, sexual images, watching sexual activities, encouraging children to behave in sexually inappropriate ways, or grooming a child in preparation for abuse. Sexual abuse can take place online, and technology can be used to facilitate offline abuse. Sexual abuse is not solely perpetrated by adult males. Women can also commit acts of sexual abuse, as can other children.</p> <p>The sexual abuse of children by other children is a specific safeguarding issue in education and all staff should be aware of it and of the school policy and procedures for dealing with it.</p>
Neglect	<p>The persistent failure to meet a child's basic physical and/or psychological needs, likely to result in the serious impairment of the child's health or development. Neglect may occur during pregnancy, for example, as a result of maternal substance abuse. Once a child is born, neglect may involve a parent or carer failing to: provide adequate food, clothing and shelter (including exclusion from home or abandonment); protect a child from physical and emotional harm or danger; ensure adequate supervision (including the use of inadequate care-givers); or ensure access to appropriate medical care or treatment. It may also include neglect of, or unresponsiveness to, a child's basic emotional needs.</p>

4.3 Indicators of abuse can be found in Appendix B.

4.4 If a child is in immediate danger or at risk of harm, a referral will be made to children's services (through the MASH) and any member of staff can make this referral. A Designated or Deputy Designated Safeguarding Lead should be available at all times, but in exceptional circumstances the

member of staff should speak to a member of the Senior Leadership Team or seek advice directly from social care and then take appropriate action. The Designated Safeguarding Lead should be made aware as soon as possible.

4.5 Staff, parents and the wider community should report any concerns that they have about the welfare of children, however minor or seemingly insignificant. Staff should not assume that someone else will report concerns.

4.6 The school recognises that any child can be the victim of abuse and may benefit from early help. However, the school will be particularly vigilant to potential need for early help if a child:

- is disabled or has certain health conditions and has specific additional needs;
- has special educational needs (whether or not they have a statutory education, health and care plan);
- has experienced multiple suspensions, is at risk of being permanently excluded from schools, colleges and in alternative provision or a pupil referral unit
- has a mental health need;
- is a young carer;
- is showing signs of being drawn in to anti-social or criminal behaviour, including gang involvement and association with organised crime groups or county lines;
- is frequently missing/goes missing from care or from home;
- is a risk of modern slavery, trafficking, sexual or criminal exploitation;
- is misusing drugs or alcohol themselves;
- has a family member in prison, or is affected by parental offending;
- is in a family circumstance presenting challenges for the child, such as substance abuse, adult mental health problems or domestic abuse;
- has returned home to their family from care;
- is showing early signs of abuse and/or neglect;
- is at risk of being radicalised or exploited;
- is at risk of 'honour-based' abuse such as Female Genital Mutilation or Forced Marriage;
- is persistently absent from education, including persistent absences for part of the school day.
- is a privately fostered child.

4.7 Our Lady of the Assumption Catholic Primary School recognises that abuse can take many different forms. Staff will also receive training on the following issues and action will be taken if Our Lady of the Assumption Catholic Primary School believes that a child is at risk of or is the victim of:

- bullying, including cyberbullying, prejudice based and discriminatory
- child criminal exploitation and sexual exploitation (including involvement in county lines)
- domestic abuse
- fabricated or induced illness
- faith-based abuse
- female genital mutilation
- forced marriage

- gangs or youth violence
- gender-based violence
- hate
- mental health
- neglect
- peer on peer abuse
- physical abuse
- radicalisation
- relationship abuse
- serious violence and harassment
- sexual abuse
- sexual violence or sexual harassment (including peer on peer abuse)
- sharing of consensual or non-consensual nude and semi-nude images/videos
- So-called 'honour-based' abuse
- trafficking and modern slavery

4.8 Our Lady of the Assumption Catholic Primary School will also take action to protect:

- Children absent from education
- Children missing from home or care

4.8.1 There are other familial issues that can have a detrimental impact on children.

We work with other agencies in line with Keeping Children Safe in Education (2025) to support children and families in the following circumstances:

- Children facing the court procedures and/or children in the court system
- Children with family members in prison
- Children who are homeless
- Children who need a social worker

4.9 Child potentially at greater risk of harm

4.9.1 The school recognises that some children need a social worker due to abuse, neglect or complex family circumstances and that abuse and trauma can leave children vulnerable to further harm, as well as educational disadvantage.

4.9.2 The Designated Safeguarding Lead will hold information relating to social workers working with children in the school.

4.9.3 This information will inform decisions about safeguarding and promoting welfare (including the provision of pastoral and/or academic support).

4.10 Children absent from Education

4.10.1 Our Lady of the Assumption Catholic Primary School understands that children that are absent from education for prolonged periods and/or repeat occasions can act as a vital warning sign to a range

of safeguarding issues including neglect, child sexual and criminal exploitation – particularly county lines.

4.10.2 Our Lady of the Assumption Catholic Primary School will report information to the Local Authority when problems are first emerging and if there is a need for the removal of a child from roll.

4.11 Elective Home Education

4.11.1 Our Lady of the Assumption Catholic Primary School recognises that many home educated children have a positive learning experience and the decision is one with the child's best interests at heart however elective home education can mean that some children are not in receipt of suitable education.

4.11.2 Since 2016, Our Lady of the Assumption Catholic Primary School has a statutory duty to inform the Local Authority of all deletions from roll. When Elective Home Education is the reason for this removal, the Local authority and other key professionals will work alongside Our Lady of the Assumption Catholic Primary School to coordinate a meeting with parents where possible, ideally before a final decision is made.

4.12 Children requiring Mental Health support

4.12.1 The school recognise that safeguarding and promoting the welfare of children includes preventing the impairment of children's mental health or development.

4.12.2 All staff will be aware that mental health problems may be an indicator that a child is suffering or is at risk of suffering abuse, neglect or exploitation.

4.12.3 Staff will not attempt to make a diagnosis of a mental health problem unless they are appropriately trained.

4.12.4 We recognise that staff are well-placed to observe behaviour that may indicate that a child is experiencing a mental health problem or is at risk of developing one. There are clear systems and processes in place for identifying possible mental health problems. If staff are concerned that a child is suffering a mental health problem, they should inform the Mental Health First Aider (Geraldine Lucas).

4.12.5 If staff are concerned that a child is experiencing a mental health problem that is also a safeguarding concern, they must report this to the Designated Safeguarding Lead (or deputy Designated Safeguarding Lead) immediately.

4.12.6 The school has a trained Mental Health First Aider who promotes mental health and wellbeing across the school. The school's Mental Health First Aider is Geraldine Lucas.

4.12.7 Further information, guidance and advice regarding mental health can be found on page 50 of Keeping Children Safe in Education 2025.

4.13 Children who are Lesbian, Gay, Bi or Trans (LGBT+)

4.13.1 The fact that a child or a young person may be LGBT is not in itself an inherent risk factor for harm. However, children who are LGBT can be targeted by other children. In some cases, a child who is perceived by other children to be LGBT (whether they are or not) can be just as vulnerable as children who identify as LGBT.

4.13.2 In line with updated Keeping Children Safe In Education (2025) guidance, it is important to consider the Cass review, which identified that caution is necessary for children questioning their gender as there remain many unknowns about the impact of social transition and children may well have wider vulnerabilities, including having complex mental health and psychosocial needs, and in some cases additional diagnoses of autism spectrum disorder and/or attention deficit hyperactivity disorder.

4.13.3 It recommended that when families/carers are making decisions about support for gender questioning children, they should be encouraged to seek clinical help and advice. When parents are supporting pre-pubertal children, clinical services should ensure that they can be seen as early as possible by a clinical professional with relevant experience.

4.13.4 As such, when supporting a gender questioning child, schools should take a cautious approach and consider the broad range of their individual needs, in partnership with the child's parents (other than in the exceptionally rare circumstances where involving parents would constitute a significant risk of harm to the child), including any clinical advice that is available and how to address wider vulnerabilities such as the risk of bullying. Schools should refer to our Guidance for Schools and Colleges in relation to Gender Questioning Children, when deciding how to proceed.

4.13.5 Risks can be compounded where children who are LGBT lack a trusted adult with whom they can be open. It is therefore vital that staff endeavour to reduce the additional barriers faced and provide a safe space for them to speak out or share their concerns with members of staff.

4.13.6 LGBT inclusion is part of the statutory Relationships Education, Relationship and Sex Education and Health Education curriculum and there is a range of support available to help schools counter homophobic, biphobic and transphobic bullying and abuse.

5 Responding to signs of abuse

5.1 If a member of staff, parent or member of the public is concerned about a child's welfare, they should report it to the designated safeguarding lead as soon as possible. On occasions when the designated safeguarding lead is not available, it should be reported to the deputy safeguarding lead without delay. Although any member of staff can make a referral to Children's Services, where possible there should be a conversation with the Designated Safeguarding Lead.

5.2 If anyone other than the Designated Safeguarding Lead makes a referral to Children's Services or to the police, they should inform the DSL as soon as possible.

5.3 All staff will be alert to indicators of abuse and will report any of the following to the Designated Safeguarding Lead immediately:

- Any concern or suspicion that a child has sustained an injury outside what is reasonably attributable to normal play.
- Any concerning behaviours exhibited by children that may indicate that they have been harmed or are at risk of harm, including unusual changes in mood or behaviour, concerning use of language and/or concerning drawings or stories.
- Any significant changes in attendance or punctuality.
- Any significant changes in a child's presentation.
- Any concerns relating to people who may pose a risk of harm to a child; and/or

- Any disclosures/allegations of abuse that children have shared.

5.4 There will be occasions where a child discloses/alleges abuse directly to a member of staff. If this happens, the member of staff will:

- listen carefully to the child and believe what they are saying.
- not promise confidentiality, as information may need to be passed on so the child and family can receive additional support.
- only ask for clarification if something is unclear and will not ask 'leading' questions.
- report disclosure to the designated safeguarding lead as soon as possible, certainly by the end of the day.
- only discuss the issue with colleagues that need to know about it; and
- will write up the disclosure and pass it to the designated safeguarding lead. It is likely they will have had a discussion with the DSL prior to this but delay should be avoided.

5.5 The designated safeguarding lead will decide about the action that needs to be taken following a member of staff raising a concern about a child or following a direct disclosure recording a clear rationale. The DSL may consider the following options:

- Manage support for the child internally within school.
- Seek advice from the social worker advice line in the MASH.
- Instigate single agency intervention and work directly with the family to improve the situation.
- Offer an Early Help Assessment to provide multi-agency help to a family.
- In cases where children are deemed to be at significant risk of harm, the DSL will refer cases to the MASH for consideration or statutory intervention. Parental consent will be obtained wherever possible before referring cases to the MASH. However, if Our Lady of the Assumption Catholic Primary School is worried that telling parents will mean the child is at greater risk of harm, we may do this without informing them.
- If parents do not consent to a referral but the school believes that a child is at significant risk of harm, a referral will still be made to Children's Services.

5.6 For further information about the Coventry Safeguarding Children Partnership's 'Right Help, Right Time' guidance, which is used by Our Lady of the Assumption Catholic Primary School to make decisions about protecting children, please visit <http://www.coventry.gov.uk/righthelprighttime>.

5.7 See page 21 for flowchart of actions that will be taken where there are concerns about a child.

5.8 In cases where members of staff become aware that Female Genital Mutilation (FGM) has been carried out on a female below the age of 18, they have a mandatory duty to report this to the police without delay and will do so. Staff should refer this to the DSL first, but the legislation requires regulated health and Children's Service professionals and teachers in England and Wales to make a report to the police where, in the course of their professional duties, they either:

- are informed by a girl under 18 that an act of FGM has been carried out on her; or

observe physical signs which appear to show that an act of FGM has been carried out on a girl under 18 and they have no reason to believe that the act was necessary for the girl's physical or mental health or for purposes connected with labour or birth.¹

¹ *introduced in Section 5B of the FGM Act 2003, as inserted by section 74 of the Serious Crime Act 2015

- If you believe a child is at risk of FGM, a referral to the MASH is also required.

5.9 The school have a duty to refer any children who are living in a private fostering arrangement to the local authority. Private fostering is when a child under the age of 16 (or under 18 if disabled) is cared for by someone who is not their parent or a close relative. This is a private arrangement made between a parent and a carer, expected to last 28 days or more, or the school are aware the 28 days has been exceeded.

5.10 All schools are subject to a duty under section 26 of the Counter-Terrorism and Security Act 2015 in the exercise of their functions to have “due regard” to the need to prevent people from being drawn into terrorism. See Appendix B for further information on the school’s Prevent duty.

5.11 If any member of staff is unsure about signs of abuse or neglect, they should speak to the Designated Safeguarding Lead.

5.12 Child on Child Abuse

5.12.1 The school understands that both adults and other children can perpetrate abuse, and can happen inside and outside of school, online or face to face. Child on Child abuse is taken very seriously and can include bullying (including cyber-bullying, prejudice-based and discriminatory bullying), abuse in intimate personal relationships between children, physical abuse, sharing of consensual or non-consensual images or videos, causing someone to engage in sexual activity without consent, sexual violence and/or harassment, upskirting, and initiation/hazing ceremonies. The school recognise that safeguarding issues can manifest as child-on-child abuse.

5.12.2 All members of staff will be made aware of the school’s policy and procedures with regards to child-on-child abuse.

5.12.3 The school will work to prevent child on child abuse by exploring appropriate behaviours towards others as part of protective behaviours and our Life to the Full programme. We will also liaise with our local PCSO and other outside agencies to support the pupils understanding of child-on-child abuse and how to respond with regard to themselves and their peers.

5.12.4 It is recognised that if there are no reported cases, such abuse may still be taking place. If an allegation of child-on-child abuse is made, the school will investigate this.

5.12.5 In the event that an allegation of child-on-child abuse is made, victims, alleged perpetrators and any other children affected will be supported by the Pastoral Manager in the first instance who may then refer to other agencies for support, and referral to the MASH will be considered.

5.12.6 The school will never pass off child on child abuse as ‘banter’, ‘having a laugh’. ‘part of growing up’ or other such termination that does not recognise the harm caused. This should be a Zero-tolerance approach as this could lead to a culture of unacceptable behaviours. It is recognised with this, that all child-on-child abuse is unacceptable and will be taken seriously.

5.12.7 The school will adhere to guidance set out in Keeping Children Safe in Education (2024) when responding to incidents of child-on-child abuse.

5.12.8 All staff will be made aware that ‘upskirting’ is a criminal offence.

5.13 Child Sexual Exploitation (CSE) and Child Criminal Exploitation (CCE)

5.13.1 Both CSE and CSE are forms of abuse that occur when an individual or group take advantage of an imbalance in power to coerce, manipulate or deceive a child into taking part in sexual or criminal activity, in exchange for something the victim needs or wants, and/or for the financial advantage or increased status of the perpetrator through violence or threat of violence. CCE and CSE can affect both males and females and can include children that have been moved for the purpose of exploitation (trafficking).

5.13.2 CCE can include children being forced or manipulated into transporting drugs or money through county lines, working in cannabis factories, shoplifting or pickpocketing, vehicle crime, threatening violence on others or even carrying weapons.

5.13.3 The school is responsible for recognising children involved in CCE are victims of exploitation and should be recognised as such due to the harm they have experienced even if they appear to have consented to the criminal activity.

5.13.4 CSE is a form of child sexual abuse including physical contact and non-contact online activities including the internet or by phone. This can happen over time or as a one off and may happen without the child recognising this as abuse or harmful.

5.13.5 The school recognises that children of the age of 16 and 17 who can legally consent to a sexual relationship may also be the victims of CSE but may not recognise this.

5.13.6 The school understands children can be risk of, or involved in, serious violent crime. This can result in an increase absence from school or college, a change in friendships, decline in educational attainment, significant change in well-being, all signs of unexplained injuries.

5.14 Sharing of consensual or non-consensual nude and semi-nude images or videos

5.14.1 “Sharing of consensual or non-consensual nude and semi-nude images or videos” refers to any sharing of youth-produced sexual imagery between children. This includes:

- A person under the age of 18 creating and sharing sexual imagery of themselves with a peer under the age of 18.
- A person under the age of 18 sharing sexual imagery created by another person under the age of 18 with a peer under the age of 18 or an adult.
- A person under the age of 18 being in possession of sexual imagery created by another person under the age of 18.

5.14.2 The school has a responsibility to educate children in the risks relating to ‘sharing consensual or non-consensual nude images or videos’ and how to keep themselves safe online.

5.14.3 Any incidents or suspected incidents of ‘sharing consensual or non-consensual nude images or videos’ should be reported to the DSL without delay.

5.14.4 Once reported to the DSL, the DSL will decide on the appropriate course of action. This could include:

- Referrals to the MASH in regard to all parties involved (also the police if an urgent response required).
- Confiscation of mobile phones in line with guidance ‘Searching, Screening and Confiscation, (January 2018).
- Support for young people involved to prevent reoccurrence.

- Sanctions in accordance with the behaviour policy.

5.14.5 Any incidents of ‘sharing consensual or non-consensual nude images or videos’ involving the following will result in a MASH and sometimes a Police referral:

- Adult involvement
- Coercion or blackmail
- Children under the age of 13
- Extreme, or violent content
- Immediate risk of harm

5.14.6 Staff will not view images or videos on pupil devices. Confiscated devices will be stored securely and passed to the relevant agencies.

5.14.7 We will work with parents as necessary if their child is involved in the sharing of consensual or non-consensual nude images or videos.

5.14.8 We operate a culture of safeguarding and young people should feel confident to disclose if they have sent an inappropriate image of themselves. Children will always be supported to retrieve and delete the images.

5.15 Domestic Abuse

5.15.1 Domestic abuse can be a single incident or a pattern of incidents. It can also include psychological, physical, sexual, financial or emotional acts of abuse.

5.15.2 The school recognises that children can be a victim of Domestic Abuse by seeing, hearing or experiencing the effects or suffering domestic abuse in their own personal relationships. These all have a detrimental impact on children’s health, well-being, development and ability to learn.

5.16 Searching, Screening and Confiscation

5.16.1 Where necessary, searching, screening and confiscation will be used to safeguard a child/children in the school.

5.16.2 The school adheres to ‘Searching, Screening and Confiscation: Advice for Schools (July 2022).

5.13.3 Please see the Positive Behaviour Policy for further information.

5.17 Online Safety

5.17.1 The school recognises that in today’s world, children need to be safeguarded from potentially harmful and inappropriate online material with many children having unlimited and unrestricted access to the internet via their mobile phone. The breadth of issues can be categorised currently into four areas of risk as taken from Keeping Children Safe in Education 2025:

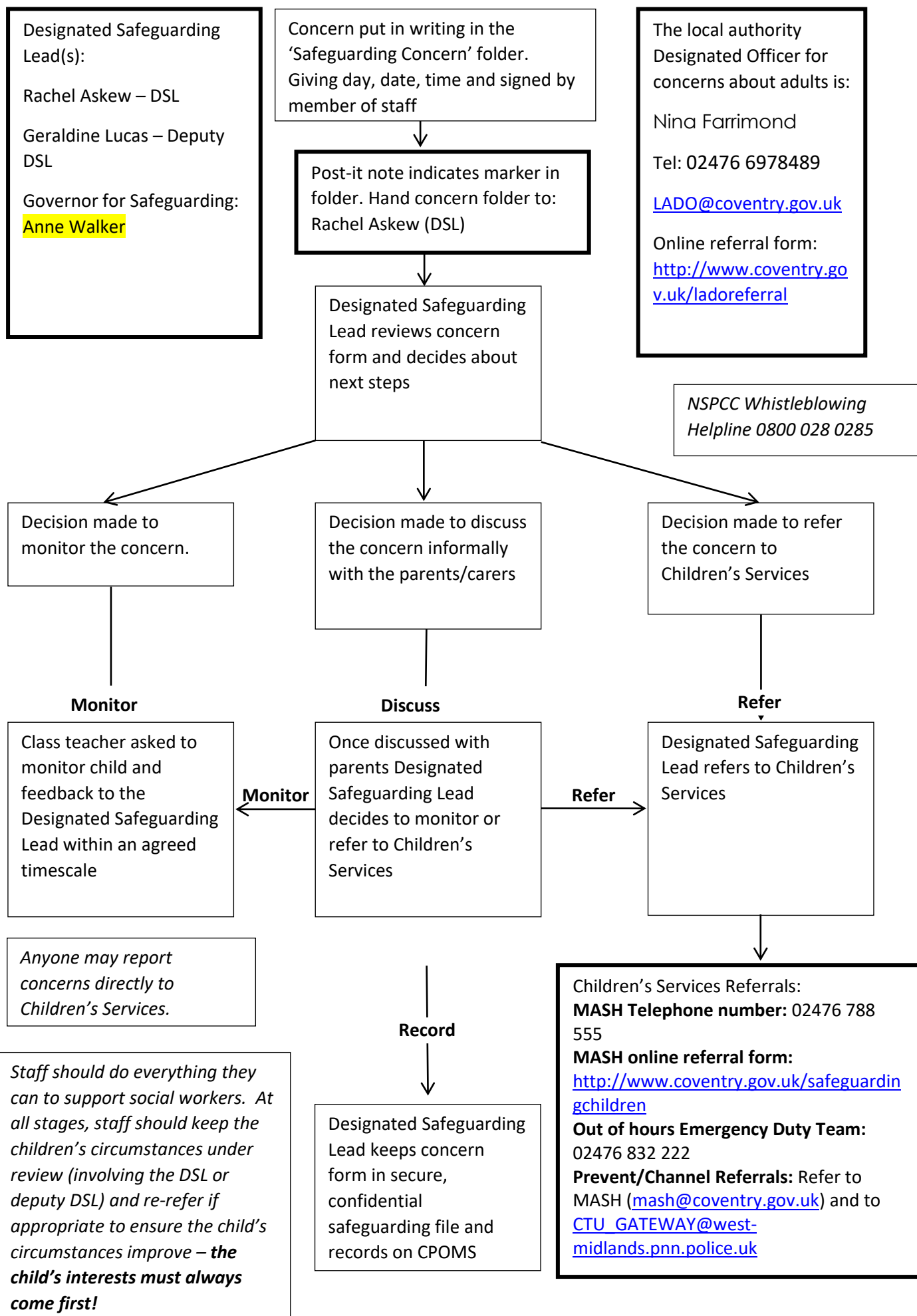
- Content – being exposed to illegal, inappropriate, or harmful content (pornography, fake news, racism, misogyny, self-harm, suicide, anti-Semitism, radicalisation, and extremism, misinformation, disinformation (including fake news) and conspiracy theories)
- Contact – being subject to harmful online interaction with other users (peer to peer pressure, commercial advertising and adults posing as children or young adults with the intention to groom or exploit)

- Conduct – online behaviour that increases the likelihood of, or causes, harm (making, sending and receiving explicit images)
- Commerce – risks such as online gambling, inappropriate advertising, phishing and or financial scams

5.17.2 The school understand that the above can take place on a student's phone or smart device (including smart watches, smart glasses and 'air tags') whilst at school/college or elsewhere. The school have responded to this by having a whole school approach to online safety which aims to protect and educate students, parents and staff in their use of technology.

5.17.3 The school has also established mechanisms to identify, intervene in and escalate any concerns highlighted through our filter and monitoring systems for both staff and students. The effectiveness of this is regularly reviewed with staff aware of how to escalate concerns.

OLA FLOW CHART FOR RAISING SAFEGUARDING CONCERNS ABOUT A CHILD



5.18 To raise concerns about children, members of staff should contact the Multi-Agency Safeguarding Hub (MASH) by telephone to discuss the referral. They should then complete the online Multi-Agency Referral Form (MARF) and submit this to the MASH. The school will follow up referrals if we do not receive feedback from Children's Services ascertain the outcome of all referrals.

MASH Telephone number: 02476 788 555

MASH online referral form: <http://www.coventry.gov.uk/safeguardingchildren>

Out of hours Emergency Duty Team: 02476 832 222

Prevent/Channel Referrals: Refer to MASH (mash@coventry.gov.uk) and to CTU_GATEWAY@west-midlands.pnn.police.uk

5.18.1 If a child's situation does not appear to be improving following a referral, the school may re-refer the child. We will also consider using the [Escalation policy: Resolution of professional disagreements](#) to ensure that our concerns have been addressed and that the situation improves for the child.

6 Record-keeping

6.1 All concerns, discussions and decision made will be recorded in writing and kept confidential and stored securely. Records will be clear, comprehensive, actioned and outcome noted.

6.2 A written record of all safeguarding and/or child protection concerns, discussions and decisions made will be kept in individual children's files. This will be separate from the main school file and will only be accessed by the relevant safeguarding staff.

6.3 Our Lady of the Assumption Catholic Primary School keeps all safeguarding files electronically, using a system called using a system called Child Protection Online Management System (CPOMS)

6.4 Staff will submit all concerns in writing to the DSL at the earliest opportunity. This may be after having a verbal conversation, but conversations will also be followed up in writing.

6.5 In the event that a child moves school, the safeguarding file will be transferred to the new setting securely and separately from the main school file in a timely manner (within 5 days for in-year transfers). Once received by the new school, this school will not retain the information.

6.6 The school will seek to hold at least two emergency contacts for every child.

6.7 All data processed by Our Lady of the Assumption Catholic Primary School is done so in line with the General Data Protection Guidelines and the Data Protection Act (2018) and Information Sharing (2024). DPA and UK GDPR don not prevent the sharing of information for the purposes of keeping children safe and promoting their welfare. Please see the following policies for additional information:

- Data Protection Policy
- GDPR Special Category Data Policy
- Records Management Policy
- Record Retention Policy
- Privacy Policy

- Privacy Notice

6.8 Further information regarding information sharing and data processing in relation to safeguarding can be found in Part One of Keeping Children Safe in Education (September 2025).

7 Photography and Images

7.1 Consent from parents to photograph children at school events for promotional reasons will be sought when the child joins Our Lady of the Assumption Catholic Primary School. We seek consent on an annual basis.

7.2 Parents can withdraw consent at any time and must notify Our Lady of the Assumption Catholic Primary School if they do not wish their child's photographs to be used.

7.3 Photographs of children used publicly will not be displayed with their name or other identifiable personal information.

7.4 Photographs of children will be processed in line with the General Data Protection Regulation.

8 Early Help Assessment

8.1 Our Lady of the Assumption Catholic Primary School is committed to supporting families as soon as a possible problem arises. It is more effective to support a family through early help than reacting to a problem later. Everyone who comes into contact with children and their families and carers have a role to play in safeguarding children. Our Lady of the Assumption Catholic Primary School is committed to working closely with its neighbouring family hub to work with families in the community to improve outcomes for children.

Our local hub is the Mosaic Family Hub.

8.2 Any child may benefit from early help, but as guided by KCSIE (2024) all school and college staff will be particularly alert to the potential need for early help for a child who:

- is disabled or has certain health conditions and has specific additional needs
- has special educational needs (whether or not they have a statutory Education, Health and Care plan)
- has a mental health need
- is a young carer
- is showing signs of being drawn in to anti-social or criminal behaviour, including gang involvement and association with organised crime groups or county lines
- is frequently missing/goes missing from education, home or care
- has experienced multiple suspensions, is at risk of being permanently excluded from schools, colleges and in Alternative Provision or a Pupil Referral Unit.
- is at risk of modern slavery, trafficking, sexual and/or criminal exploitation
- is at risk of being radicalised or exploited • has a parent or carer in custody, or is affected by parental offending

- is in a family circumstance presenting challenges for the child, such as drug and alcohol misuse, adult mental health issues and domestic abuse

8.3 Our Lady of the Assumption Catholic Primary School works within the Coventry Safeguarding Children Partnership's 'Right Help, Right Time' framework, available on the CSCP website.

9 Staff training

9.1 In order for staff to be able to understand and discharge their safeguarding and child protection duties, Our Lady of the Assumption Catholic Primary School has committed to training staff throughout the academic year. All staff members will be made aware of Our Lady of the Assumption Catholic Primary School's safeguarding processes and structures and will receive training on these as part of their induction. As part of this training and their annual refresher, they will also receive:

- This 'Safeguarding and Child Protection Policy'
- The staff Code of Conduct
- Copies of Part 1 and/or Annex A of Keeping Children Safe in Education (September 2025)
- School procedures for Children Absent from Education
- The school Behaviour Policy
- Low Level Concerns Policy
- Acceptable Use Policy

9.2 Staff at Our Lady of the Assumption Catholic Primary School will receive Annual Level 1 Safeguarding training plus training to support Mental health, Coventry Safeguarding Children Partnership training, DSL briefings, GDPR training, online safety. Governors also receive annual safeguarding training.

9.3 Our Lady of the Assumption Catholic Primary School recognise that children may engage in risky behaviours that may put them at additional risk of danger. These can include drug taking, alcohol abuse, truancy and 'the sharing of consensual or non-consensual nude images or videos. Staff will be trained in these areas in order to be able to further recognise if a child is at risk of harm.

9.4 All staff are aware that children may not feel ready or know how to tell someone that they are being abused, exploited, or neglected, and/or they may not recognise their experiences as harmful. For example, children may feel embarrassed, humiliated, or being threatened. This could be due to their vulnerability, disability and/or sexual orientation or language barriers. This should not prevent staff from having a professional curiosity and speaking to the DSL if they have concerns about a child. It is also important that staff determine how best to build trusted relationships with children and young people which facilitate communication.

10 Safer Recruitment

10.1 Our Lady of the Assumption Catholic Primary School is committed to providing children with a safe environment, in which they can learn. We take safer recruitment seriously and all staff are subject to the following checks:

- Identity check
- DBS clearance
- Prohibition from teaching checks (where required)
- Barred List check
- Section 128 checks (as required – governors; leadership and management)
- Reference check (two references required)

- Professional qualifications check
- Right to work in the UK check
- Further checks for those who have lived outside the UK
- Disqualification Under the Childcare Act 2006 checks (as required)
- Verification on the candidate's mental and physical fitness may also be sought

10.2 A record of all checks completed for members of staff will be recorded on the Single Central Record.

10.3 All new members of staff will be required to obtain DBS clearance. Our Lady of the Assumption Catholic Primary School reserves the right to re-check DBS clearance for any member of staff where information is received that indicates that they may pose a risk to children and may ask candidates to be registered on the DBS update service.

10.4 At least one member of every interview panel will have undergone Safer Recruitment training which will be refreshed every 2 years.

10.5 We take proportionate decisions on whether to check individuals above and beyond what is legally required dependant on individual circumstance.

10.6 Any visitor to the school who has not been subject to the necessary checks will be supervised at all times and risk assessed.

10.7 All safer recruitment practices at Our Lady of the Assumption Catholic Primary School comply with Keeping Children Safe in Education (September 2025). See Part 3 of Keeping Children Safe in Education (September 2025) for further information.

10.8 See Safer Recruitment policy for further details.

11 Allegations of abuse against staff

11.1 Our Lady of the Assumption Catholic Primary School takes all safeguarding matters including low level concerns and/or allegations that harm to a child has occurred against staff (including agency, volunteers and contractors) seriously and will manage them in line with this policy, Part Four of Keeping Children Safe in Education (September 2025) and the CSCP Guidance, 'Allegations Against Staff and Volunteers'.

11.2 Allegations or concerns may include:

- Staff having behaved in a way that has harmed a child or may have harmed a child.
- Staff possibly committing a criminal offence against or related to a child.
- Staff behaving towards a child or children in a way that indicates that he or she may pose a risk of harm to children; or
- Staff behaving or possibly behaving in a way that indicates they may not be suitable to work with children (including behaviour outside of work). This is known as 'Transferable risk'.

11.3 If a concern or allegation of abuse arises against the Headteacher, or should there be a conflict of interest to the Headteacher, it must be immediately reported to the Chair of Governors

11.4 If a concern or allegation of abuse arises against any member of staff, supply teacher, volunteer or contractor other than the Headteacher, it must be reported to the Headteacher without delay.

11.5 Concerns or allegations of abuse against staff must be reported to the Headteacher or Chair of Governors as appropriate and not discussed directly with the person involved.

11.6 The Headteacher or Chair of Governors should consider if the allegation meets the harms threshold as outlined in Working Together to Safeguard Children (2023) guidance indicating that a person in a Position of Trust has:

- behaved in a way that has harmed a child, or may have harmed a child
- possibly committed a criminal offence against or related to a child
- behaved towards a child or children in a way that indicates they may pose a risk of harm to children
- behaved or may have behaved in a way that indicates they may not be suitable to work with children

11.7 If they feel the criteria is met then they should refer into Coventry LADO using the online referral form on:

[https://myaccount.coventry.gov.uk/service/Allegations against people who work in positions of trust with children referral](https://myaccount.coventry.gov.uk/service/Allegations_against_people_who_work_in_positions_of_trust_with_children_referral)

The Headteacher or Chair of Governors can also seek guidance/advice if unsure by emailing lado@coventry.gov.uk.

11.8 'Low-level' concern does not mean it is not significant. This is a term used for any concern (no matter how small) that an adult working with a child may have breached the staff Code of Conduct and does not meet the harm threshold. Examples of which may include:

- Being overly friendly with children
- Having favourites
- Taking photographs of children on their mobile phone
- Engaging with a child on a one-to-one basis in a secluded area or behind a closed door. Or;
- Humiliating pupils.

The details of the LADO can be found at the front of this policy.

11.9 Concerns relating to a position of trust issue will be referred to the Local Authority designated officer within 24 hours. In accordance with Keeping Children Safe in Education 2024, the school will make every effort to maintain confidentiality and guard against unwanted publicity while an allegation is being investigated or considered.

11.10 If a child has suffered or may have suffered abuse or harm, a MASH referral will also be made.

11.11 In the instances where an allegation is dealt with internally, the Local Authority designated officer will provide information and support to Our Lady of the Assumption in managing the allegation.

11.12 A referral to the Disclosure and Barring Service will be made if a member of staff is dismissed or removed from their post as a result of safeguarding concerns, irrespective of whether they have resigned.

11.13 Supply Teachers and all contracted staff

11.13.1 Although the school does not directly employ supply teachers and contractors, the school will ensure that any concerns or allegations are referred to LADO and the relevant agency informed as the employer.

11.13.2 The school will never cease to use a supply teacher for safeguarding reasons without liaising with the Local Authority Designated Officer and reaching an agreed outcome.

11.13.3 Governing bodies/proprietors will liaise with the supply agency to determine whether to suspend or redeploy the supply teacher whilst they carry out their investigation.

11.13.4 The school will inform supply agencies of its process for managing allegations, including inviting the agency's human resource manager (or equivalent) to meetings and regularly updating agencies on relevant school policies. The school will usually take the lead because agencies do not have direct contact with children or staff, so will not be able to gather information.

11.14. Governors

11.14.1 If an allegation or concern is about a Governor, the school/college will follow local procedures.

11.15. Volunteers

11.15.1 Risk assessments and a DBS check will be requested for all volunteers. Under no circumstances will a volunteer prior to satisfactory checks being completed be alone with children unsupervised or allowed to work in regulated activity.

11.16. Whistleblowing

11.16.1 Our Lady of the Assumption operates a culture of safeguarding and all staff should report any concerns about poor or unsafe practice, or Our Lady of the Assumption's safeguarding processes to the senior leadership team.

11.16.2 Appropriate whistleblowing procedures are in place whereby the senior leadership team will take all concerns seriously.

11.16.3 In the event that a member of staff is unable to raise an issue with senior leadership in school, they should refer to Part 1 of Keeping Children Safe in Education for additional guidance on whistleblowing procedures.

11.17. Complaints Procedure

11.17.1 The School operates a complaint procedure which will be followed where a pupil or parent raises a concern about poor practice towards a pupil that initially does not reach the threshold for child protection action. Poor practice examples include unfairly singling out a pupil or attempting to humiliate them, bullying or belittling a pupil or discriminating against them in some way. Complaints are managed by the headteacher, other members of the senior leadership team and governors.

11.17.2 Complaints from staff are dealt with under the school's complaints and disciplinary and grievance procedures. (Also refer to Low level concerns)

11.17.3 Complaints which escalate into a child protection concern will automatically be managed under the school's child protection procedures.

12 Promoting safeguarding and welfare in the curriculum

12.1 Our Lady of the Assumption Catholic Primary School recognises the importance of teaching children how to stay safe and look after their mental health and are committed to equipping children with the skills and knowledge to have successful and happy lives.

12.2 The school will teach children about safeguarding, including online safety. As part of a broad and balanced curriculum, the school will cover relevant issues in line with government guidance on Relationships Education, Relationships and Sex Education and Health Education. We use Life to the Full to teach about online safety.

12.3 Schools and colleges play a crucial role in preventative education. Preventative education is most effective in the context of a whole-school or college approach that prepares pupils and students for life in modern Britain and creates a culture of zero tolerance for sexism, misogyny/misandry, homophobia, biphobic and sexual violence/harassment. The school/college will have a clear set of values and standards, upheld and demonstrated throughout all aspects of school/college life. These will be underpinned by the school/college's behaviour policy and pastoral support system, as well as by a planned programme of evidence based RSHE delivered in regularly timetabled lessons and reinforced throughout the whole curriculum (RSHE)

12.4 Children at Our Lady of the Assumption Catholic Primary School will receive the following as part of our promotion of safeguarding across the curriculum: Protective behaviours, RSE lessons, Online safety, Drugs and Alcohol lessons, Safeside in Birmingham, visiting speakers, support from PCSO, parent sessions, Mental Health Awareness.

12.5 Education at home and remote learning

12.5.1 If children are unable to attend school due to school closure staff will deliver learning via Seesaw (an online platform) and they will continue to operate under this policy and KCSIE.

12.5.2 Where IT equipment has been loaned to pupils to enable learning at home, appropriate filter software will be installed.

13 Children Looked After

13.1 The most common reason for children to be looked-after is because they have experienced abuse and/or neglect. Our Lady of the Assumption Catholic Primary School recognises that children looked after may have additional vulnerabilities by virtue of this. The Designated Lead for Looked-After and Previously Looked-After Children is Mrs Rachel Askew (in the absence of Mrs Amanda Finch).

13.2 Staff will receive training on how to best safeguard children who are Looked-After and who have been Previously Looked-After.

13.3 The school will work with Personal Advisors when children leave care (where applicable).

13.4 Our Lady of the Assumption Catholic Primary School is committed to working with other agencies to ensure the best outcomes for Looked-After and Previously Looked-After children.

14 Children with Special Educational Needs and Disabilities or physical health needs

14.1 As outlined in Keeping Children Safe in Education (2025), Our Lady of the Assumption Catholic Primary School is aware that children with additional needs or disabilities may be more vulnerable to abuse both online and offline and additional barriers may exist when recognising abuse and neglect. This could be because:

- assumptions that indicators of possible abuse such as behaviour, mood and injury relate to the child's disability without further exploration.
- being more prone to peer group isolation or bullying (including prejudice-based bullying) than other children.
- the potential for children with SEN and disabilities or certain medical conditions being disproportionately impacted by behaviours such as bullying, without outwardly showing any signs; and
- communication barriers and difficulties in overcoming these barriers.²

14.2 Any reports of abuse involving children with SEND will therefore require close liaison with the designated safeguarding lead and SENCO. Staff will also be trained in recognising signs of abuse in children with SEN and disabilities certain medical conditions.

14.3 Staff will take into account the needs of a child when responding to concerns of abuse or when taking a disclosure. We recognise that some children require specialist intervention to communicate and advice from the SENCO will be sought in these circumstances.

14.4 Safeguarding learning opportunities within the curriculum will be appropriately differentiated to ensure all children can access it.

15 Use of reasonable force

15.1 There may be occasions when staff are required to use reasonable force to safeguard children. We will not use any more force than is proportionate and necessary. Staff are trained in Team Teach and we will not use any more force than is necessary, employing de-escalation techniques in the first instance. All incidents are recorded on CPOMS. Parents are always informed when restraint is used.

16 Alternative Provision

16.1 The School will continue to be responsible for the safeguarding of Students placed with an alternative provision provider and will be satisfied that this provider meets the needs of the pupil. Written confirmation from the provider that appropriate safeguarding checks have been carried out will be sought on individuals working at the establishment, i.e. those checks that the school would otherwise perform in respect of its own staff.

16.2 The DSL will continue to have oversight of all pupils accessing any part of their learning from an alternative provider or delivery online or offsite provided by any organisation or individual not employed by the school. The DSL will ensure that robust arrangements are in place for timely and effective information sharing of safeguarding information between the school and alternative/external providers.

16.3 The DSL will also take responsibility for ensuring that robust procedures are in place to confirm attendance and to enable the swift reporting of non-attendance and children absent from alternative/external providers at any time when they should be with that provider.

17 Children staying with host families (see Annex D KCSIE)

18 Summary

18.1 The school is committed to safeguarding children and will always make safeguarding decisions that are in the best interests of each child. For further information or if you have any queries about this policy, please contact the school.

Appendix A

The school's safeguarding policy is intended to be used in conjunction with the following policies:

Policy name
Acceptable use of Cameras and Mobile Phones
Anti-Bullying Policy
Attendance Policy
Positive Behaviour Policy
Children with Health Needs who Cannot Attend School
Complaints Policy
Data Protection
Designated Teacher for Looked After and Post Looked After Children Policy
Drug Education Policy
Educational Visits Policy
Emergency School Lockdown Policy
First Aid including medicines
Health and Safety at Work Policy
Intimate Care Policy
Missing Child Policy
Low Level Concerns Policy
Online Safety Policy
Peer on Peer Abuse
Prevent Duty
Safer Recruitment Policy
Single Equality Scheme
Sex and Relationship Policy
Special Educational Needs and Disabilities Policy
Staff Code of Conduct
Supporting Pupils Medical Conditions Policy
Whistle Blowing Policy

The school adheres to Coventry Safeguarding Children Partnership Policies, which can be found here:
<https://westmidlands.procedures.org.uk/page/contents#p3>

Appendix B – Further Safeguarding Information

Types of Abuse

As outlined in paragraph 4.4, the school will act if we believe a child is at risk of or is suffering from abuse. Abuse is not limited to physical, emotional, sexual abuse and neglect. For further information on the definitions of the types of abuse below, please refer to Keeping Children Safe in Education (2025), Annex A.

See below for policy information relating to other key safeguarding issues. All decisions taken in responding to concerns of abuse will be taken in the best interests of the child.

The school takes all forms of abuse seriously (including the list below) and will respond sensitively and quickly to any reports. Children should report any issues to their class teacher, to the DSL, Pastoral Manager or any trusted member of staff and we will work to resolve it.

We also teach children about the dangers of all types of abuse through our curriculum.

Abuse can take many forms and we have several policies that cover the different aspects. Please see the Anti-Bullying Policy, the Positive Behaviour Policy and paragraph 5.8 of this policy for further information.

Once a report of abuse has been made, staff should immediately report this to the DSL or Deputy DSL, then write it up using the children's exact words on our CPOMS. The DSL or other relevant staff member will then report to the relevant agency or authority e.g. Social Care, MASH, Police and Prevent.

Bullying, including cyber- or online-bullying

Our Lady of the Assumption Catholic Primary School takes all forms of bullying seriously and will respond sensitively and quickly to any reported bullying. Children should report any bullying to their form tutor, to the DSL or to any trusted member of staff and we will work to resolve it.

We also teach children about the dangers of bullying through our curriculum.

Bullying can take many forms and we have several policies that cover different aspects of bullying. Please see the Anti-Bullying Policy, the Behaviour Policy and paragraph 5.8 of this policy for further information.

Child criminal exploitation (including involvement in county lines)

Domestic abuse – Includes Operation Encompass

Fabricated or induced illness

Faith-based abuse

Female genital mutilation (A form of so-called 'honour-based' abuse)

Forced marriage (A form of so-called 'honour-based abuse')

Gangs or youth violence

Gender-based violence

Hate

Homelessness

(So-called) 'Honour-based' abuse (For FGM and Forced Marriage, types of so-called 'honour-based' abuse, see above)

Radicalisation and Extremism – All professional staff are aware that they have the responsibility for reporting this individually however, but they still should notify the DSL.

Relationship abuse

Serious Violence

Sexual violence or sexual harassment (including peer-on-peer abuse)

Sharing of consensual or non-consensual nude images and videos

Trafficking and modern slavery

Children absent from education, home or care

The school will also take action to protect:

- Children absent from education
- Children missing from home or care

Children Absent from Education / Children Missing from home or care:

School will enter pupils on the admission register at the beginning of the first day on which the school has agreed, or been notified, that the pupil will attend the school.

If a pupil fails to attend on the agreed or notified date, the school will undertake reasonable enquiries to establish the child's whereabouts and consider notifying the local authority at the earliest opportunity.

School will monitor pupils' attendance through the daily register and inform the local authority of the details of pupils who fail to attend regularly or have missed ten school days or more without permission.

Where a pupil has not returned to school for ten days after an authorised absence or is absent from school without authorisation for twenty consecutive school days, the pupil can be removed from the admission register when the school and the local authority have failed, after jointly making reasonable enquiries, to establish the whereabouts of the child.

This only applies if the school does not have reasonable grounds to believe that the pupil is unable to attend because of sickness or unavoidable cause.

Private Fostering

The school has a duty to refer any children who are living in a private fostering arrangement to the local authority.

We will do this through a MASH referral. It is important that parents/carers inform us if a child is going to be staying at an alternative address to that of their primary care-givers for more than 28 days.

Indicators of abuse

See below for possible indicators of abuse. (Taken from What to do if you are worried a child is being abused, 2015)

- Children whose behaviour changes – they may become aggressive, challenging, disruptive, withdrawn or clingy, or they might have difficulty sleeping or start wetting the bed.
- Children with clothes which are ill-fitting and/or dirty.
- Children with consistently poor hygiene.
- Children who make strong efforts to avoid specific family members or friends, without an obvious reason.
- Children who don't want to change clothes in front of others or participate in physical activities.
- Children who are having problems at school, for example, a sudden lack of concentration and learning or they appear to be tired and hungry.
- Children who talk about being left home alone, with inappropriate carers or with strangers.
- Children who do not reach developmental milestones, such as learning to speak or walk, late, with no medical reason.
- Children who are regularly absent from school or education.
- Children who are reluctant to go home after school.
- Children with poor school attendance and punctuality, or who are consistently late being picked up.
- Parents who are dismissive and non-responsive to practitioners' concerns.
- Parents who collect their children from school when drunk, or under the influence of drugs.
- Children who drink alcohol regularly from an early age.
- Children who are concerned for younger siblings without explaining why.
- Children who talk about running away; and
- Children who shy away from being touched or flinch at sudden movements.

The school recognises that the above list of indicators is not exhaustive and staff will receive training on indicators of abuse.